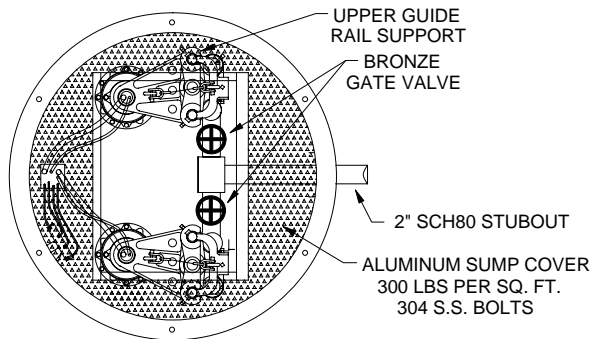


PHI ENVIRO-STATION

MODEL NO. BPSRA125CV-3672



SPECIFICATIONS:

WET WELL:

Fiberglass reinforced polyester wet wells shall be manufactured from commercial grade polyester resin or vinyl ester resin, with fiberglass reinforcements. The resin system shall be suitable for atmospheres containing hydrogen sulphide acid as well as other gases associated with the wastewater collection systems. The wet well shall be a one piece unit manufactured by L.F. Manufacturing, Inc. Giddings, Texas.

GRINDER PUMP:

The grinder pump shall be a Myers WGL20 or approved equal. The grinder pump shall have a 208v, 3phase motor operating in a clean dielectric oil that will lubricate the bearings, and seals. The pump impeller shall be of the recess vortex type to provide an open unobstructed passage to the volute. The grinder assembly shall consist of a rotating radial cutter and a stationary shredding ring. Pumps requiring dual cutting blades will not be accepted.

NOTES:

1. BALL CHECK VALVES MUST SLIDE OUT WITH PUMP FOR EASY SERVICING.
2. CHECK VALVES INSTALLED IN THE DISCHARGE PIPE ARE NOT ACCEPTABLE.

CONTROLS:

Provide a "EP" control panel with a 250SF plug-in controller w/ run lights, seal failure lights, seal failure test light, H-O-A's, alarm test switch, and float indicator lights. The enclosure shall have a rating of Nema 4X. The Control Panel shall be manufactured by Controls of Houston, Houston, Texas.

ASSEMBLY:

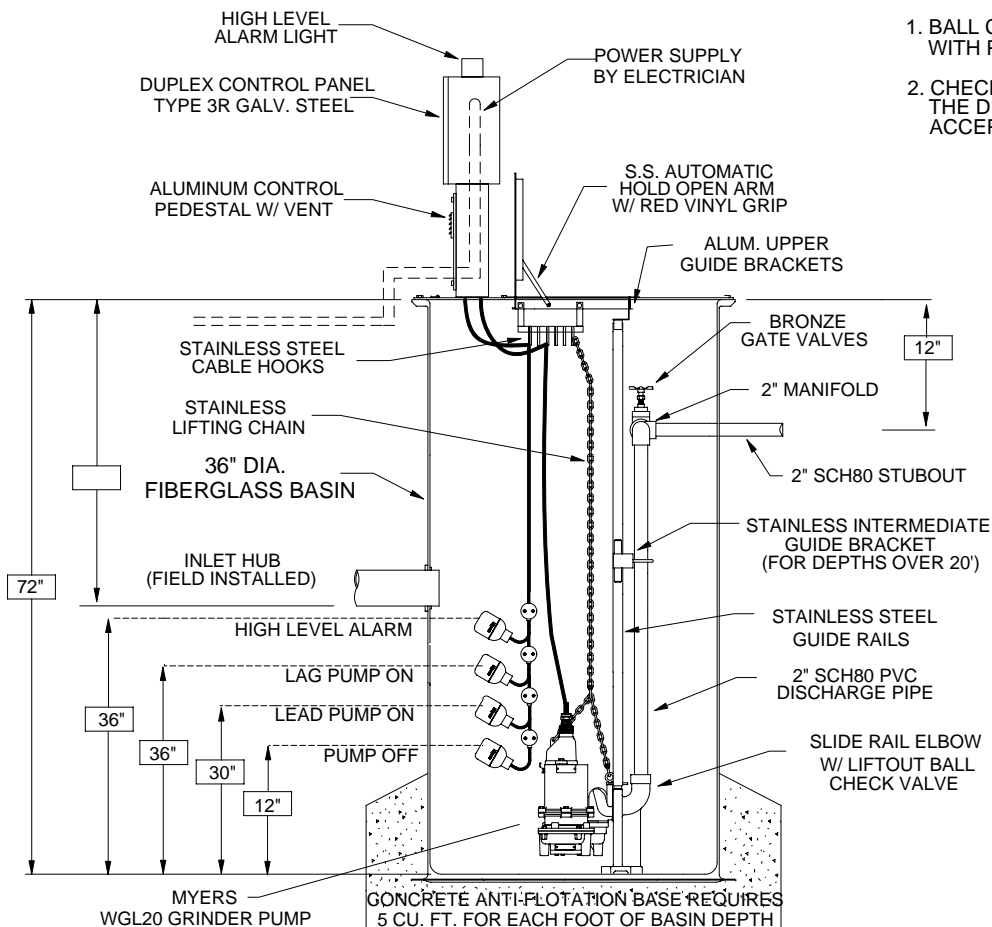
The entire wet well assembly shall be fabricated and assembled by PHI, Houston, Texas, a company with 20 years experience.



A.S.T.M. - D3299

A.S.T.M. - D3757

PUMP	PUMP MFG.	PUMP MODEL
1	MYERS	WGL20-03-15
2	MYERS	WGL20-03-15
3	MYERS	



NOTICE
This drawing has been published and is the sole property of:

DWG. NO.:
BPSRA125CV-3672

SCALE: NONE DATE: 07/06/06

PUMPS OF HOUSTON, INC.
PH: 281-448-1352 FAX: 281-931-1083
TOLL FREE 1-800-255-1532

TITLE: PREFABRICATED FIBERGLASS LIFT STATION

PROJECT:

ENGINEER:

CUSTOMER:

REV. A