

**Myers**<sup>®</sup>

Pentair Water

# COMPLETE GRINDER PACKAGE OFFERING

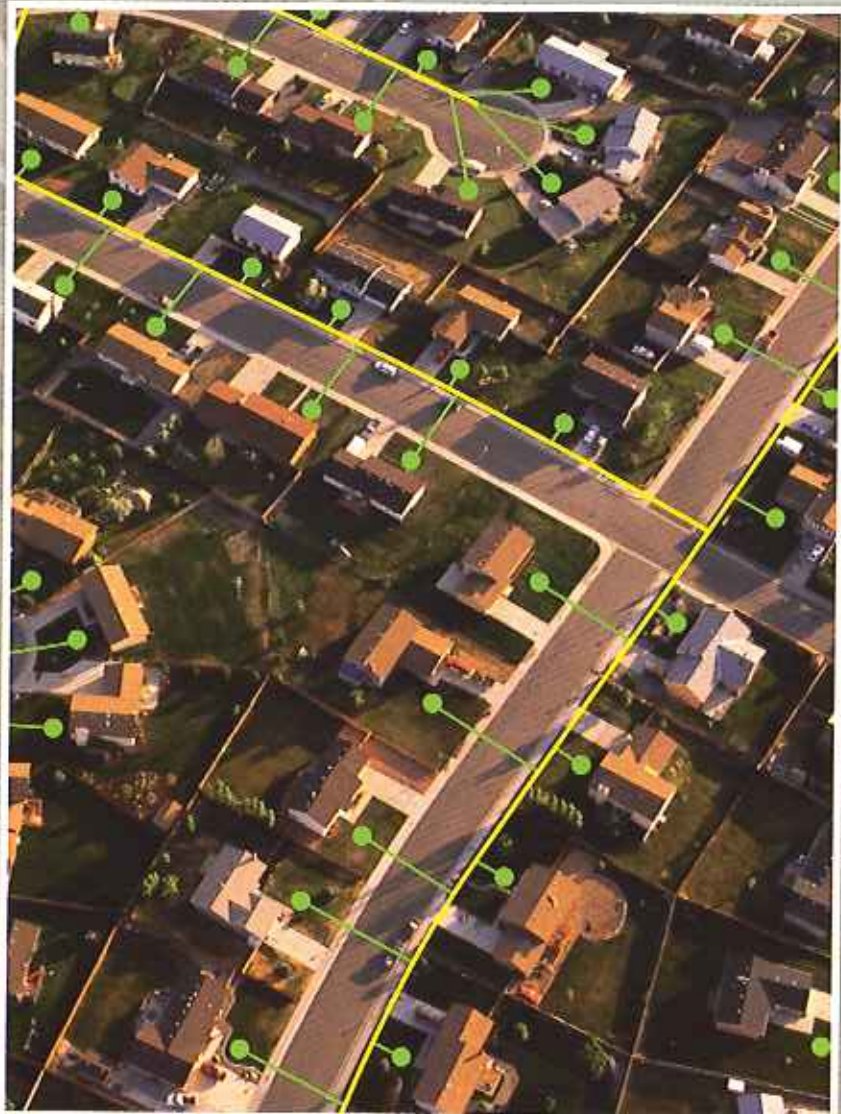


## SRA Systems

Package includes your choice of a 2 HP submersible grinder pump, SRA rail system, control panel, three floats and a fiberglass basin available with anti-flotation collar at various depths.



**Pentair**  
**Water**<sup>™</sup>



- Submersible Grinder Pump System
- Service Connection
- Pressure Sewer Connection Line

### **Our complete grinder package is a proven, innovative solution to a changing world**

The use of grinder pumps has proved to be a superior solution that is cost effective and minimally disruptive to the natural environment.

### **Submersible grinder pumps keep beauty in the environment and cash in your pocket**

A grinder pump based system can be installed using relatively small diameter piping (as small as 1-1/4" to 2" (32-50mm) laterals and mains), which can be laid in shallow trenches. Since the wastewater is pumped under low pressures, the piping can follow the terrain and be installed at minimal depths (just under the frost line in colder climates and according to local codes). Cost savings come from the ability to eliminate costly deep excavation and through the use of small diameter pipe. Minimal excavation and soil disruption means that the beauty of any existing natural surrounding features can be saved.

### **About Myers**

Where innovation meets tradition, you'll find a quality Myers product coupled with dependable service through a network of authorized distributors. Manufactured in a modern 410,000-square foot facility on 80 acres in Ashland, Ohio, the Myers brand continues with innovative solutions featuring applied wastewater systems focused to meet specific customer requirements for residential, municipal and commercial wastewater applications. Comprehensive engineering services together with a complete line of wastewater pumping systems, proper pump selection tools for peak efficiency and lean manufacturing processes, complete the Myers brand of quality wastewater pumping systems for a total value offering. Today, the Myers brand is owned by Pentair Water, a division of Pentair Inc. located in Golden Valley, Minnesota.

# COMPLETE GRINDER PACKAGE

**Myers**<sup>®</sup>

Pentair Water



Stainless steel brackets and chain ensure parts will not corrode



Reliable float activation



Lift-out rail system eliminates the need for personnel to enter the basin

## CHOOSE YOUR PUMP



Market: Residential

### MG200

Centrifugal Automatic Grinder Pump with Traditional Float Activation



Market: Light Commercial

### WGL20

Centrifugal Automatic Grinder Pump with Traditional Float Activation



Market: Residential/  
Heavy Commercial

### WG20

Submersible Centrifugal Dual Seal Grinder Pump with Traditional Float Activation



Market: Residential/Commercial  
for Hazardous Locations

### WGX20

Submersible Centrifugal Explosion-Proof Grinder Pump with Traditional Float Activation

## SRA Systems



JBox  
NEMA 4X  
SST rails  
Fiberglass basin

Float activation  
Submersible centrifugal grinder pump

SRA lift-out assembly with integral ball check valve



Control Panel

# COMPLETE GRINDER PACKAGE



## MG200 Series



No control panel required.  
Single seal



## WGL20 Series



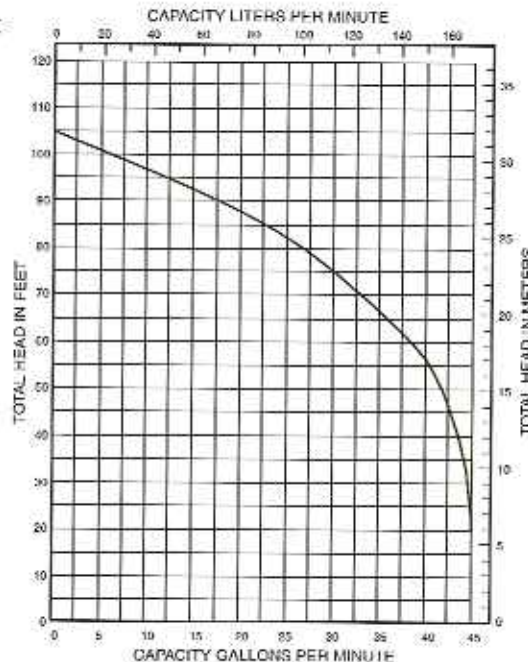
Double seal

### MG200 Centrifugal Automatic Grinder Pump

- Recessed impeller provides steep non-overloading operating curve.
- Oil-filled motor for maximum heat dissipation and constant bearing lubrication.
- Recessed impeller reduces radial bearing loads, increases bearing life.
- High torque capacitor starts single phase motor for assured starting under heavy load. No external capacitor needed.
- On-winding current and temperature-sensitive overload.
- Shredding ring and grinder impeller are replaceable without dismantling pump or motor.

### WGL20 Centrifugal Automatic Grinder Pump

- Choice of standard, high head or high flow designs.
- Recessed impeller provides steep non-overloading operating curve.
- Oil-filled motor for maximum heat dissipation and constant bearing lubrication.
- Recessed impeller reduces radial bearing loads, increases bearing life.
- High torque capacitor start/run single phase or three phase motors for assured starting under heavy load.



- Seal leak probe warns of seal leak condition, helps prevent costly motor damage.
- Single phase motors have on-winding current and temperature-sensitive overload.
- Shredding ring and grinder impeller are replaceable without dismantling pump or motor.



### WG20 Series



Double seal



### WGX20 Series



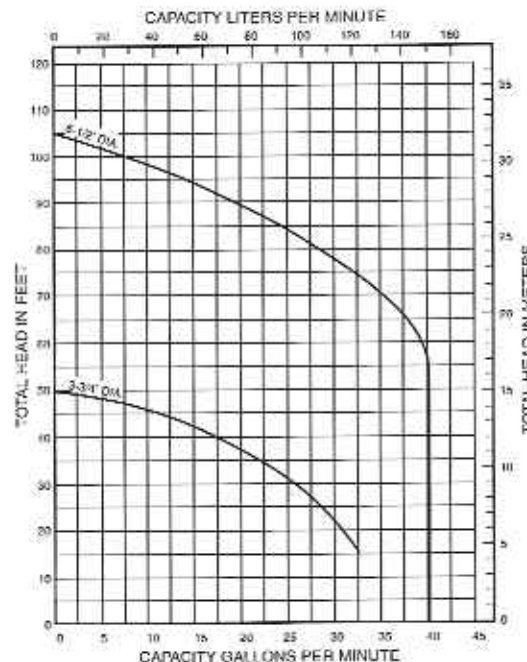
Double seal.  
Packaged for use in Class 1, Group D hazardous locations.

#### WG20 Centrifugal Grinder Pump

- Recessed impeller provides steep non-overloading operating curve.
- Oil-filled motor for maximum heat dissipation and constant bearing lubrication.
- Recessed impeller reduces radial bearing loads, increases bearing life.
- High torque capacitor starts single phase motor for assured starting under heavy load.
- On-winding temperature-sensitive overload.
- Shredding ring and grinder impeller are replaceable without dismantling pump or motor.

#### WGX20 Centrifugal Grinder Pump

- Optional explosion-proof rail package. Brass and spark-free system utilizing WG Series pump and SRA system. Consult a Myers sales representative.
- Choice of standard, high head or high flow designs.
- Recessed impeller provides steep non-overloading operating curve.
- Oil-filled motor for maximum heat dissipation and constant bearing lubrication.
- Recessed impeller reduces radial bearing loads, increases bearing life.
- High torque capacitor start/run single phase or three phase motors for assured starting under heavy load.



- Seal leak probe warns of seal leak condition, helps prevent costly motor damage.
- Single phase motors have on-winding temperature-sensitive overload.
- Shredding ring and grinder impeller are replaceable without dismantling pump or motor.

# COMPLETE GRINDER PACKAGE

## SYSTEM OPTIONS

### Optional Covers/Lids

Solid fiberglass diamond plate and aluminum covers available with access hatch. Consult a Myers sales representative.

### Optional 2" (50mm) Mushroom Vent

Weather resistant with screen vent.

### Optional Basin Diameters

Consult a Myers sales representative.

### Optional Basin Depths

Available in 1' increments. Consult a Myers sales representative.

### Optional Explosion-Proof Rail Package

Brass and spark-free system utilizing WGX Series pump and SRA system. Consult a Myers sales representative.

## CONTROL OPTIONS

### Optional Seal Fail Alarm

Available with dual seal pumps only.

### Optional Thermal Overload Alarm

### Optional Intrinsically Safe Control Box

Utilized for WGX Series pump and SRA system. Consult a Myers sales representative.



# COMPLETE GRINDER PACKAGE

**Myers**<sup>®</sup>

Pentair Water



## SUBDOOR CONTROL CENTER



Alarm Circuit Power Light

Test/Silence Pushbutton

Alarm Light  
Hand Run Switch

Pump Run Light

## Control Panel

The Float Pro is an innovative approach to today's pump control system requirements with standard features unmatched by most competitors. Through the use of a standard subdoor and raised backpanel, the Float Plus Series offers a revolutionary design for housing common control panel features such as circuit breakers, start components, contactors and a terminal strip. While others ask you for more dollars to cover options, the Float Plus Series provides many of the most requested items as standard equipment. Some of these standard features includes lockable latches, a flashing red alarm light with an electronic horn, the innovative touch to silence pad, and a control circuit board, all in a NEMA 4X enclosure. In addition to unsurpassed standard features, Float Plus offers an exclusive control circuit board.

Conveniently located on the subdoor, the float indication lights allow the user to see the status of each float and flashes should a float fail. Available in simplex for single phase and three phase, these innovative controllers are certain to revolutionize the industry.



## SPECIFICATIONS

|  |   |
|--|---|
| Available in Simplex                               |   |
| Enclosure Dimensions                               | 12.5" x 12" x 7.5" (32mm x 30.5mm x 19mm) |
| Overall Dimensions                                 | 14.5" x 12" x 7.5" (32mm x 30.5mm x 19mm) |
| Enclosure  | NEMA 4X with molded mounting feet         |
| Alarm Piezo  | 95 db with "Touch to Silence" circuitry   |
| Flashing Red Alarm Beacon                          | Provides 360° Visual Display              |
| Weight   | 10.8 lbs. (49kg)                          |
| 25 amp "DP" Heavy-Duty Definite Purpose Contactors |   |
| Nonconductive Injection Molded Subdoor             |   |
| Blown Fuse Status Lights                           |   |
| cULus 508 Listed                                   |   |
| Requires three float switches for simplex          |   |



Pentair Water

# WARRANTY

**MYERS** warrants that its products are free from defects in material and workmanship for a period of twelve (12) months from the date of purchase or eighteen (18) months from the date of manufacture.

During the warranty period and subject to the conditions hereinafter set forth, **MYERS** will repair or replace to the original user or consumer parts that prove defective due to defective materials or workmanship of **MYERS**. Contact your nearest authorized **MYERS** distributor or **MYERS** for warranty service. At all times, **MYERS** shall have and possess the sole right and option to determine whether to repair or replace defective equipment, parts or components.

Start up reports and electrical system schematics may be required to support warranty claims. Warranty effective only if **MYERS** supplied or authorized control panels are used.

**LABOR, ETC. COSTS:** **MYERS** shall IN NO EVENT be responsible or liable for the cost of field labor or other charges incurred by any customer in removing and/or reaffixing any **MYERS** product, part or component thereof.

**THIS WARRANTY WILL NOT APPLY:** (a) to defects or malfunctions resulting from failure to properly install, operate or maintain the unit in accordance with printed instructions provided; (b) to failures resulting from abuse, accident or negligence; (c) to normal maintenance services and the parts used in connection with such service; (d) to units that are not installed in accordance with applicable local codes, ordinances and good trade practices; or (e) if the unit is moved from its original installation location and (f) unit is used for purposes other than for what it was designed and manufactured.

**RETURN OR REPLACED COMPONENTS:** any item to be replaced under this Warranty must be returned to **MYERS** in Ashland, Ohio, or such other place as **MYERS** may designate, freight prepaid.

**PRODUCT IMPROVEMENTS:** **MYERS** reserves the right to change or improve its products or any portions thereof without being obligated to provide such a change or improvement for units sold and/or shipped prior to such a change or improvement.

**WARRANTY EXCLUSIONS:** **MYERS** MAKES NO EXPRESS OR IMPLIED WARRANTIES THAT EXTEND BEYOND THE DESCRIPTION ON THE FACE HEREOF. **MYERS** SPECIFICALLY DISCLAIMS THE IMPLIED WARRANTIES OF MERCHANTABILITY AND FITNESS FOR ANY PARTICULAR PURPOSE.

Some states do not permit some or all of the above warranty limitations and, therefore, such limitations may not apply to you. No warranties or representations at any time made by any representatives of **MYERS** shall vary or expand the provision hereof.

**LIABILITY LIMITATION:** IN NO EVENT SHALL **MYERS** BE LIABLE OR RESPONSIBLE FOR CONSEQUENTIAL, INCIDENTAL OR SPECIAL DAMAGES RESULTING FROM OR RELATED IN ANY MANNER TO ANY **MYERS** PRODUCT OR PARTS THEREOF. PERSONAL INJURY AND/OR PROPERTY DAMAGE MAY RESULT FROM IMPROPER INSTALLATION. **MYERS** DISCLAIMS ALL LIABILITY, INCLUDING LIABILITY UNDER THIS WARRANTY, FOR IMPROPER INSTALLATION – **MYERS** RECOMMENDS INSTALLATION BY PROFESSIONALS.

Some states do not allow the exclusion or limitation of incidental or consequential damages, so the above limitation or exclusion may not apply to you. This Warranty gives you specific legal rights and you may also have other rights which vary from state to state. In the absence of suitable proof of this purchase date, the effective date of this warranty will be based upon the date of manufacture.



Pentair Water

1101 Myers Parkway  
Ashland, Ohio 44805

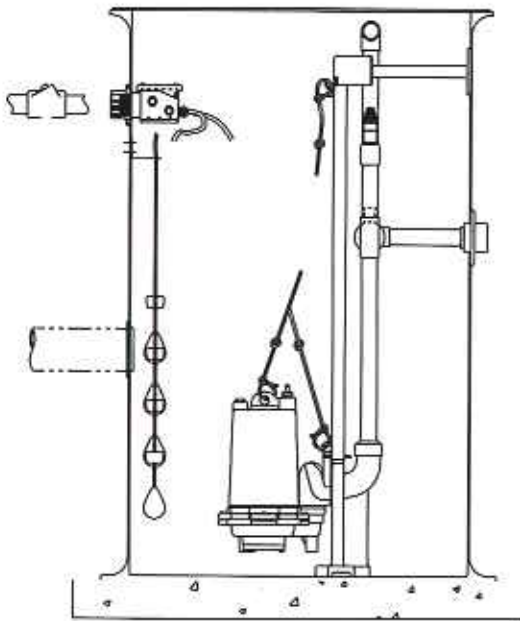
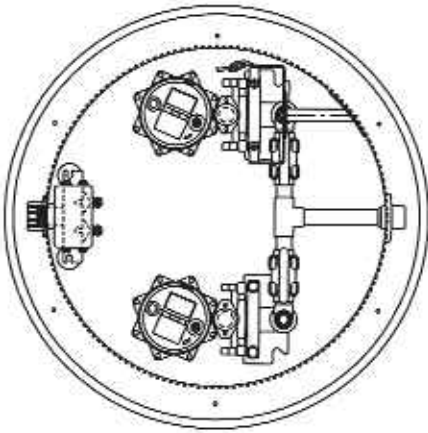
Tel: (419) 289-1144  
Fax: (419) 289-6658

269 Trillium Drive  
Kitchener, Ontario  
Canada N2G 4W5

Tel: (519) 748-5470  
Fax: (519) 748-2553

# SRA-125D

## Duplex Rail System



The SRA-125D Rail System is tailored to your specific hydraulic needs for low pressurized sewer system requirements. Engineered with heavy duty cast iron lift-out elbow with built-in check valve. SST hardware and anti-siphon protection, the SRA-125D Rail System is the preferred choice. Offered in simplex or duplex design with centrifugal submersible grinder pumps coupled with a range of quality controls and accessories.



**PVC Shut-Off Valve and Traditional Float Controls**  
Easy to operate with extended handle.

**Lift-Out**  
Includes heavy-duty cast iron construction with SST brackets and integral ball check valve.



**Brackets and Rails**  
Stainless steel brackets and rails ensures parts will not corrode.

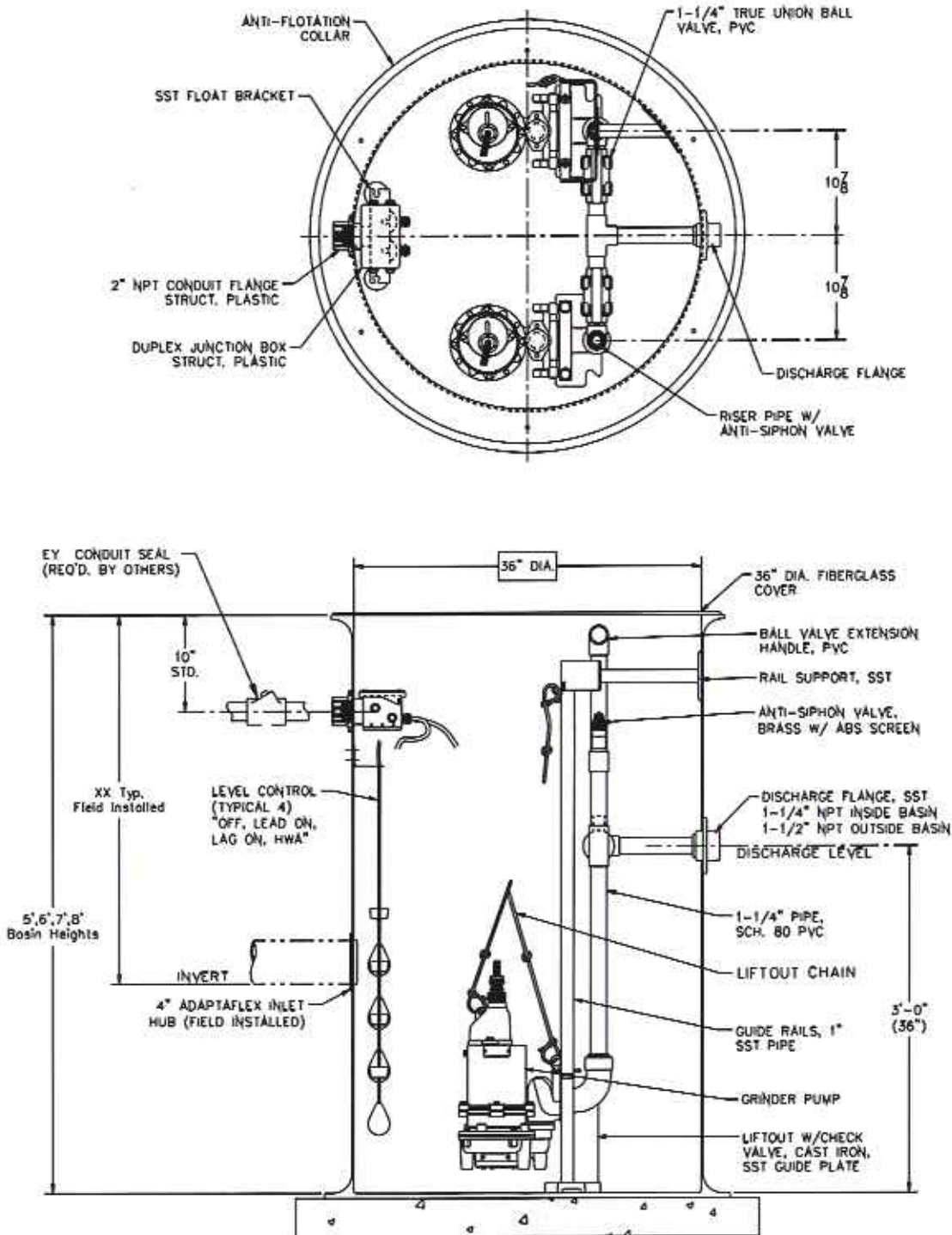
- Built-in check valve
- Fast and easy pump removal
- No need for personnel to enter basin
- Heavy-duty cast iron construction
- Corrosion resistant with anti-flotation ring
- Multiple basin diameters and basin depths are available
- Positive machine fit with o-ring seal
- Available with float controls

**Myers**<sup>®</sup>

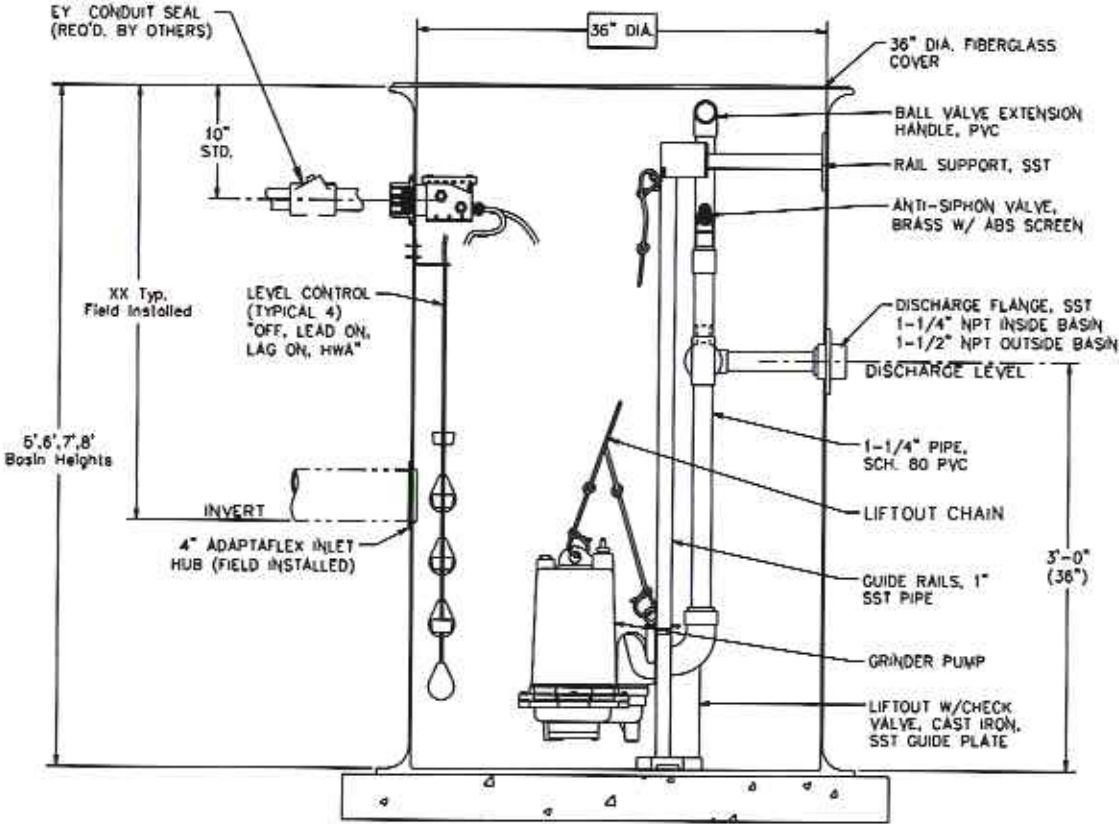
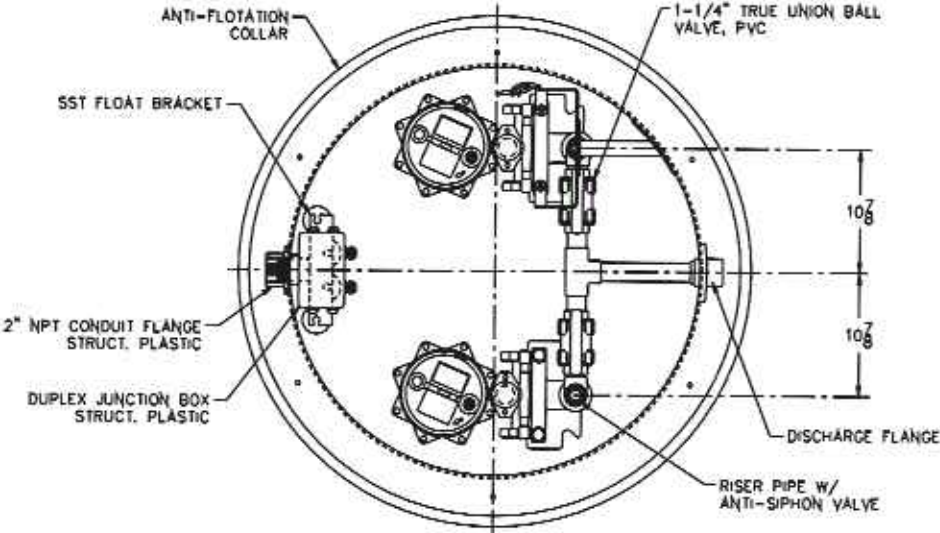
Pentair Water

# SRA-125D

**Pump: WGL20**  
**Control: Float Pro**  
**Type: Duplex**

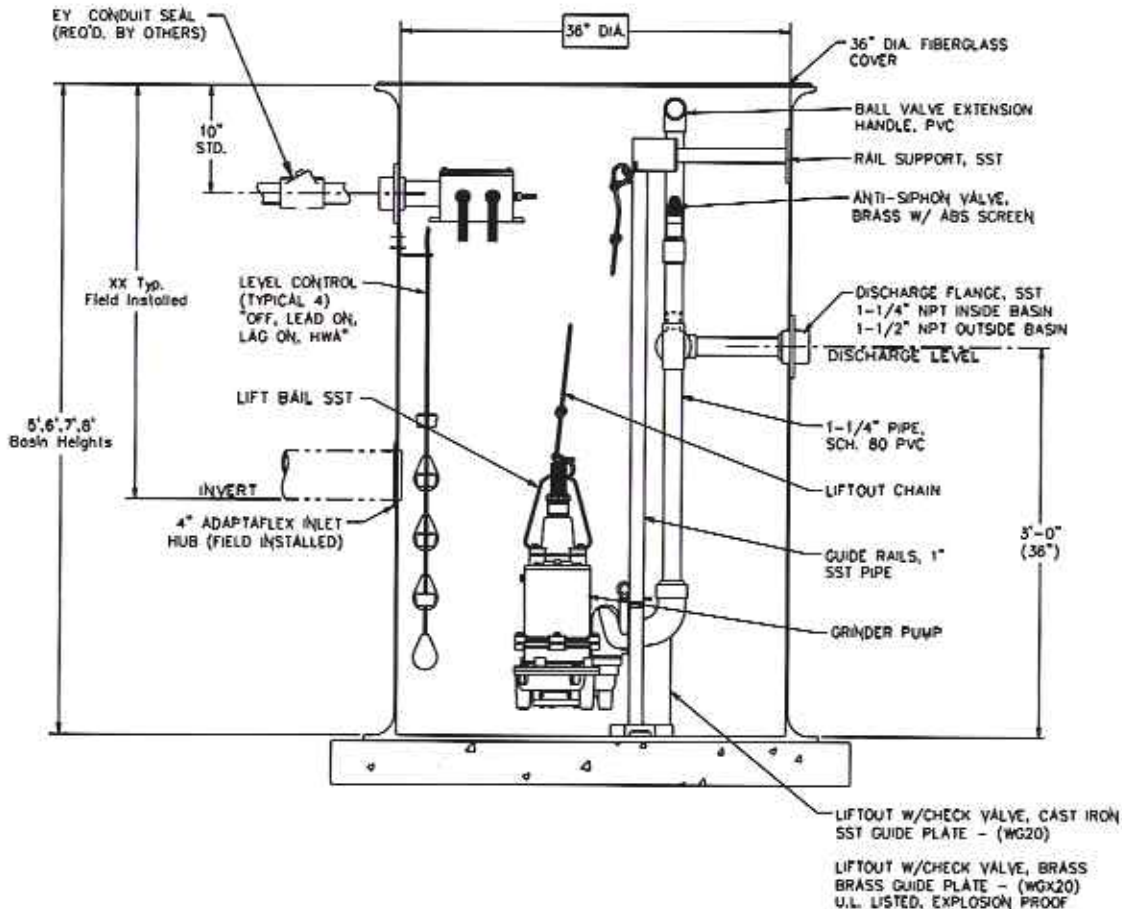
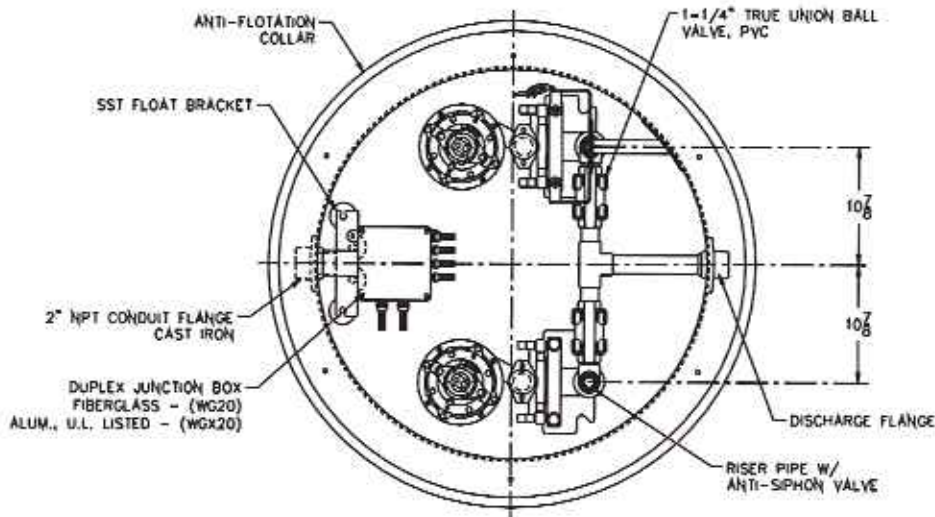


**Pump: MG200**  
**Control: Float Pro**  
**Type: Duplex**



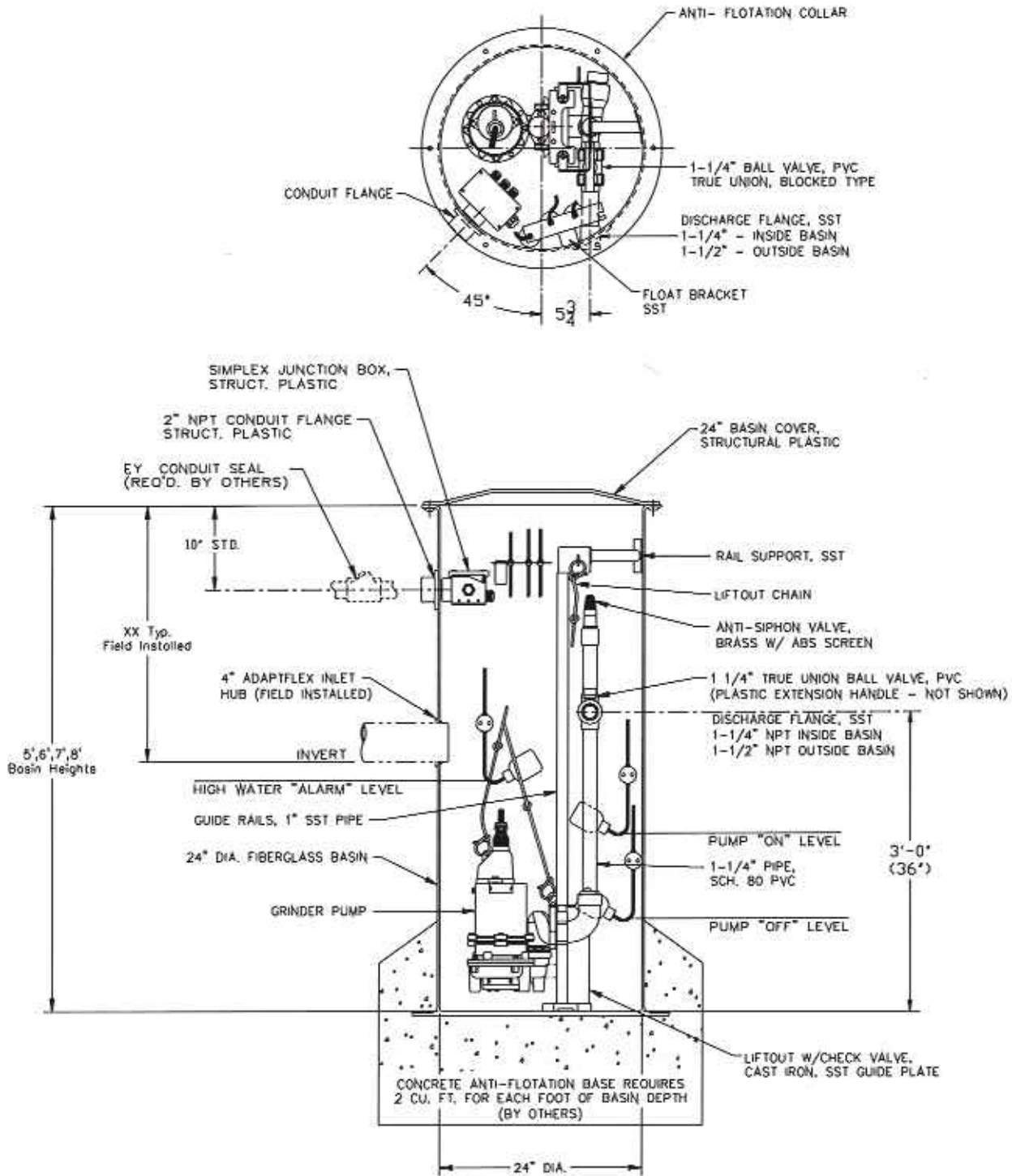
# SRA-125D

**Pump: WG/WGX20**  
**Control: Float Pro**  
**Type: Duplex**



# SRA-125S

**Pump: WGL20**  
**Control: Float Pro**  
**Type: Simplex**



# SRA-125S

## Simplex Rail System



The SRA-125S Rail System is tailored to your specific hydraulic needs for low pressurized sewer system requirements. Engineered with heavy duty cast iron lift-out elbow with built-in check valve. SST hardware and anti-siphon protection, the SRA-125S Rail System is the preferred choice. Offered in simplex or duplex design with centrifugal submersible grinder pumps coupled with a range of quality controls and accessories.



**PVC Shut-Off Valve and Traditional Float Controls**  
Easy to operate with extended handle.

**Lift-Out**  
Includes heavy-duty cast iron construction with SST brackets and integral ball check valve.



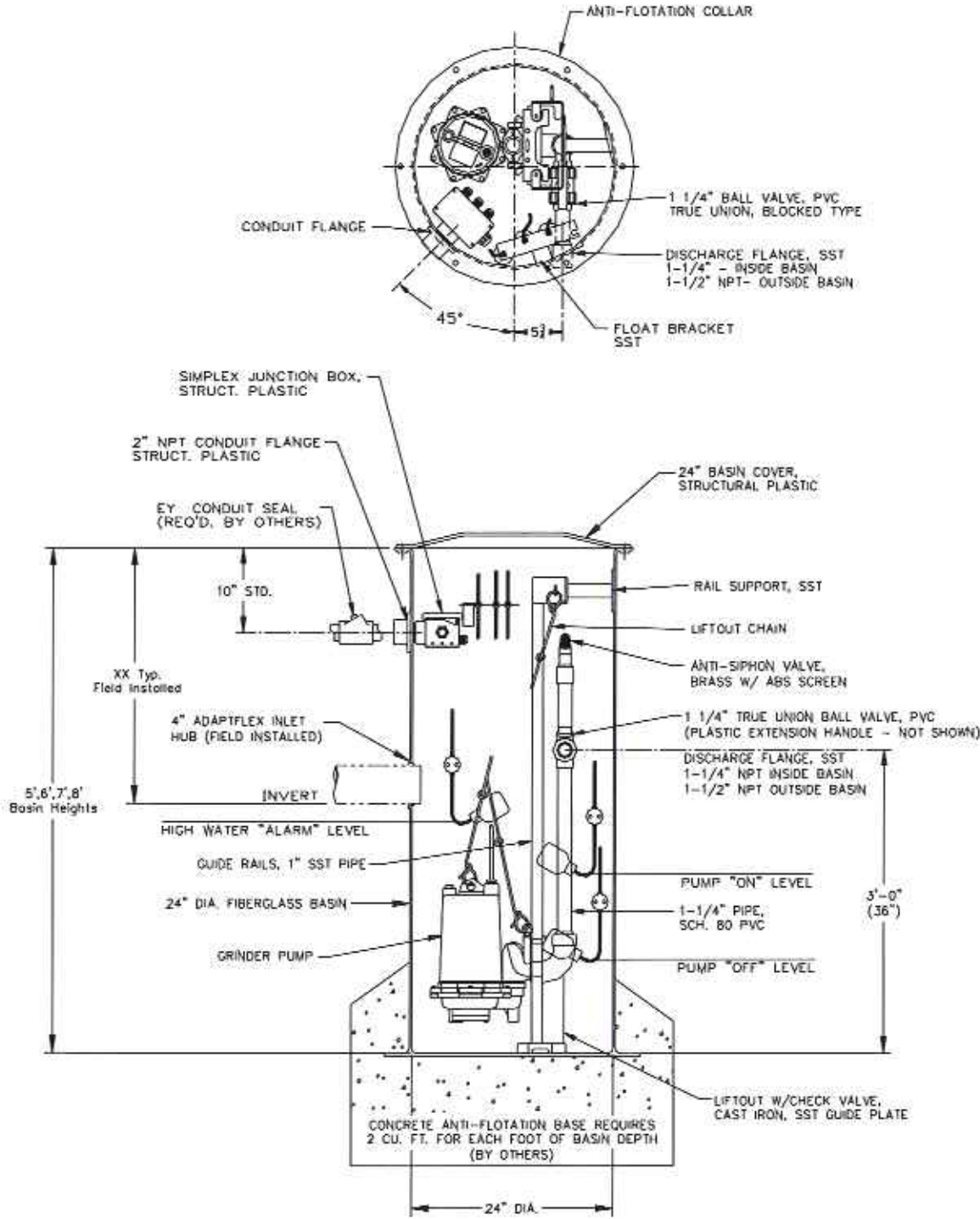
**Brackets and Rails**  
Stainless steel brackets and rails ensures parts will not corrode.

- Built-in check valve
- Fast and easy pump removal
- No need for personnel to enter basin
- Heavy-duty cast iron construction
- Corrosion resistant with anti-flotation ring
- Multiple basin diameters and basin depths are available
- Positive machine fit with o-ring seal.
- Available with float controls

**Myers**<sup>®</sup>

Pentair Water

**Pump: MG200**  
**Control: Float Pro**  
**Type: Simplex**



# SRA-125S

**Pump: WG/WGX20**

**Control: Float Pro**

**Type: Simplex**

