

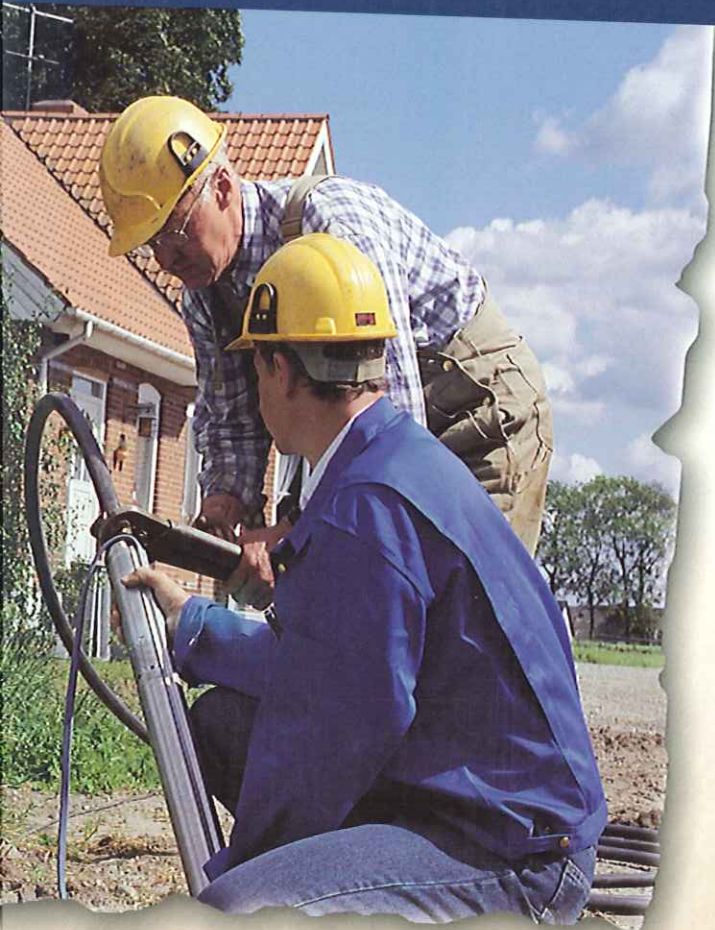
SmartFlo™

SQE CONSTANT PRESSURE SYSTEM

- AN ENTIRE SOLUTION
- UNIQUE FEATURES
- EASY INSTALLATION



SMARTFLO SQE CONSTANT WATER PRESSURE SYSTEM



FOR 3" OR LARGER WELLS

Main Applications:

- > Domestic Water Supply
- > Irrigation
- > Pressure Boosting
- > Water Transfer

SmartFlo SQE Constant Water Pressure System Consists of:

- > SQE Multistage, Centrifugal Pump Driven by Permanent Magnet Motor
- > CU301 Control Unit
- > Pressure Sensor
- > 2-Gallon Pressure Tank (sold separately)

SQE Features the Following:

- > **SOFT-START...**
...to prevent water hammering and electrical stress on service mains
- > **HIGH STARTING TORQUE...**
...even at low supply voltage, the SQ/SQE delivers a reliable water supply
- > **OVERLOAD PROTECTION...**
...protects the motor against unstable voltage supply by reducing speed or stopping the pump
- > **DRY RUNNING PROTECTION...**
...stops and prevents the pump from damage in case of dry running



Pressure Sensor

- > provides accurate readings

Rugged Design

- > state-of-the-art composite construction
- > tungsten carbide/ceramic bearings
- > floating Impellers

Advanced Electronics

- > over/under voltage protection
- > over-temperature protection
- > overload protection
- > dry-run protection
- > surge protection
- > soft-start

Permanent Magnet Motor

- > built into both SQ/SQE pumps
- > three motors cover 1/3 to 1.5 Hp
- > high efficiency output & wide load range
- > starting torque competitive with 3-wire induction motor

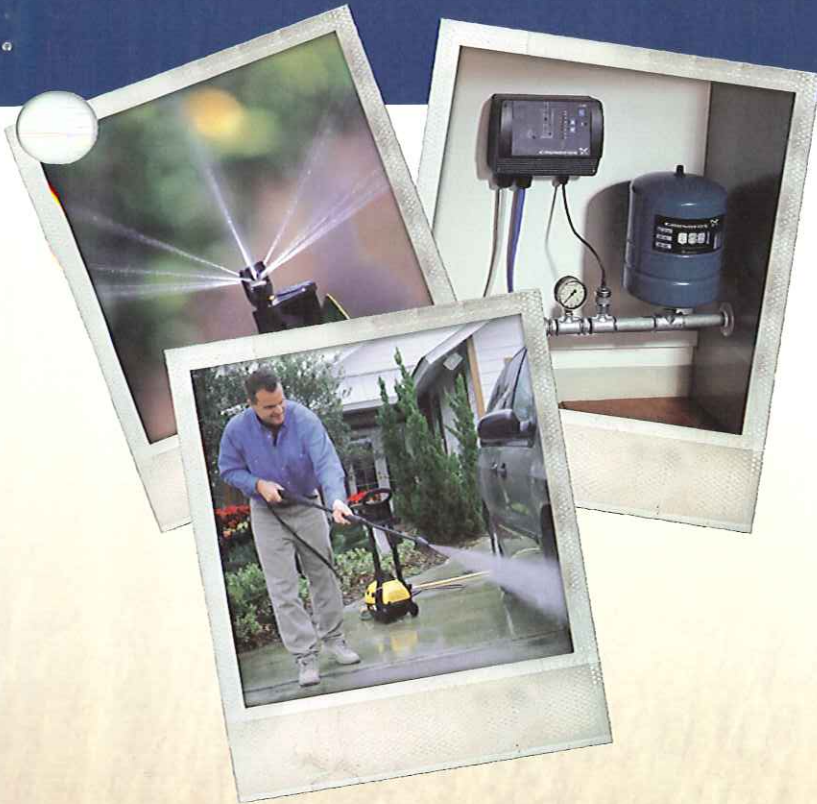
Reliable Check-Valve

- > spring loaded
- > operates at any position from vertical to horizontal

CU 301 Control Box

- > user-friendly controls
- > maintains constant pressure





CONSTANT WATER PRESSURE

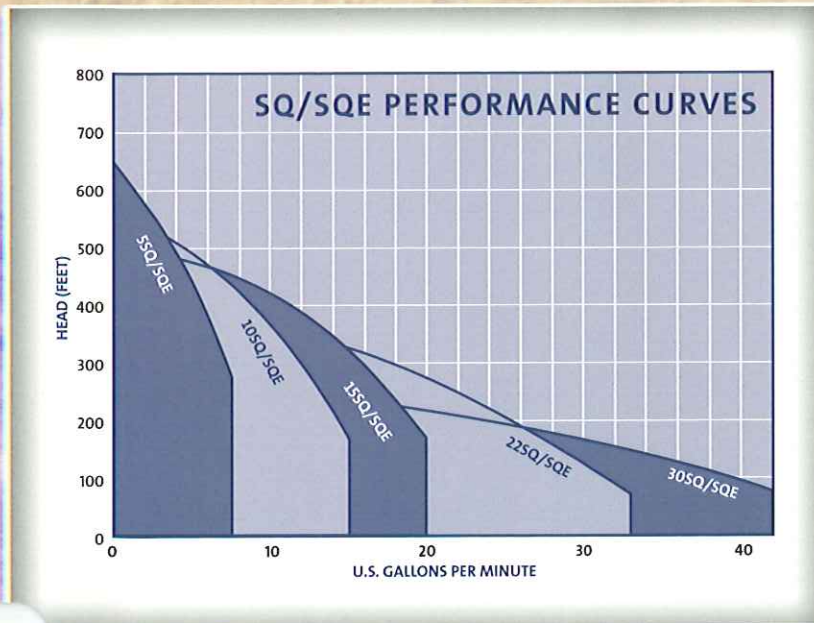
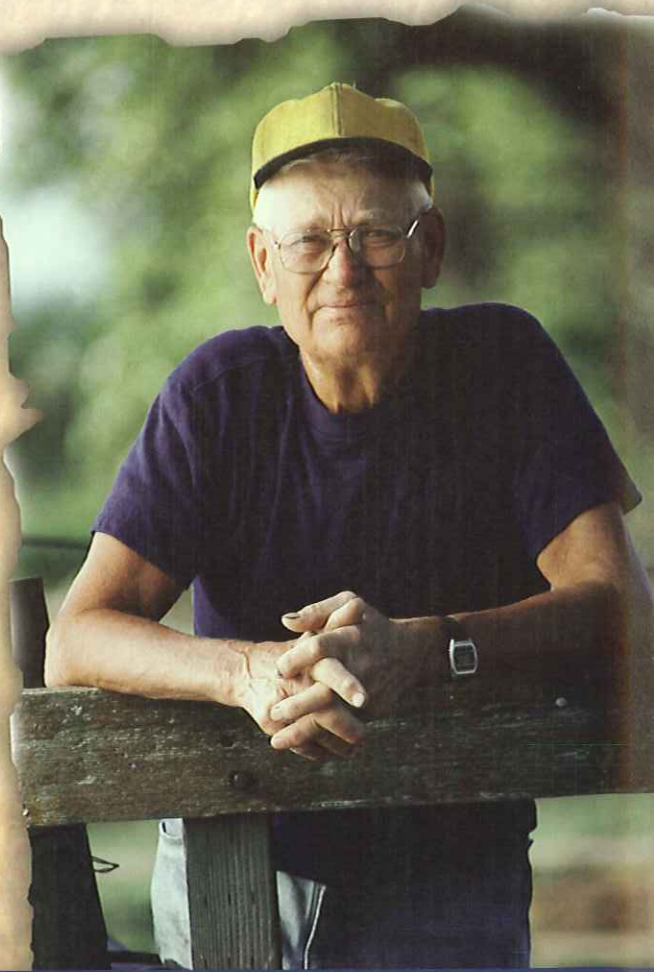
If you use well water, you've probably discovered the more water you need, the less water pressure you have. Constant water pressure means you will always get what you need when the tap is open - even if the sprinklers are on and someone else is pressure-washing the car.

EASY INSTALLATIONS

Grundfos SQE is designed for fast, easy installations. All connections fit most new and existing systems. Additionally, SQE is small and light-weight, making it easy to manage even in difficult applications.

RELIABLE PERFORMANCE

It is our practice at Grundfos to design and build value and quality in every product we manufacture. Built with down to earth state of the art materials, the SQE time tested designs continue to be rugged and reliable.



SQ? or SQE? NOW YOU HAVE A CHOICE!

SQ pumps are two-wire, single phase, fixed speed, 3-inch, high performance units designed for use in traditional systems. SQ pumps are ideal for domestic water supply, irrigation, pressure boosting and water transfer applications utilizing standard controls and conventional tanks. In addition, SQ pumps are offered in a variety of performance ranges and are equipped with built in pump protection (dry run, overload, over temperature, over/under voltage), soft start, and starting torque competitive with three-wire motors.

SQE Smartflo systems are two-wire, single phase, variable speed, 3-inch, high performance units designed to provide constant pressure according to house hold needs. SQE systems utilize an SQE pump, CU 301 control unit, pressure sensor, and 2-gallon tank (sold separately) to deliver reliable constant pressure in domestic water supply, irrigation, pressure boosting, and water transfer applications. Even when the needs change, the system adjusts its performance to meet the demand. SQE does what you want when you want. In addition, SQE pumps are offered in a variety of performance ranges and are equipped with built in pump protection (dry run, overload, over temperature, over/under voltage), soft start, and starting torque competitive with three-wire motors.

For the nearest Grundfos Distributor, visit our web site at:
www.grundfos.com or contact Partner Service at 913-227-3400

L-SQ-SL-016	06/03
Printed in U.S.A.	

U.S.A.
Grundfos Pumps Corporation
17100 W. 118th Terrace
Olathe, KS 66061
Telephone: (913) 227-3400
Fax: (913) 227-3500

Canada
Grundfos Canada Inc.
2941 Brighton Road
Oakville Ontario L6H 6C9
Telephone: (905) 829-9533
Fax: (905) 829-9512

Mexico
Bombas Grundfos de Mexico S.A. de C.V.
Boulevard TLC no. 15
Parque Industrial Stiva Aeropuerto
C.P. 66600 Apodaca, N.L. Mexico
Telephone: 011-52-81-8144-4000
Fax: 011-52-81-8144-4010